



Contents:

- 2 Going the Extra Mile
- 3 Mission and History
- 5 Fundraising Goal
- 6 Giving Card



Taking the next step forward
to reach boys in need.

Extra Mile Campaign

Going the Extra Mile

Through this Extra Mile Capital Campaign, Generations is going the distance by expanding our highly successful program. Adding a new psychiatric residential treatment facility will give an additional 30 adolescent boys the chance to find Hope, Heal from the trauma, and leave Generations as true Heroes having successfully overcome the terrible cycle of sexual abuse. ➤ A boy who arrives at Generations for services often bears the weary look of someone who is filled with shame and guilt, holding little hope for the future. The boys who leave Generations have undergone a transformation that is equally as visible. With smiles on their faces and a spring in their step, they leave with hope and an eagerness to make a positive difference in the world they now see as a much brighter place.

The Need

According to the Bureau of Justice statistics, nearly 70% of all reported sexual assaults occur to children ages 17 and younger – and approximately 40% of them are abused by older or larger children whom they know. There is a growing and underserved population of troubled adolescent boys tragically caught in the sexually abusive cycle. These are severely abused boys who may be experiencing more intense levels of fear, anxiety, depression, anger, hostility, and poor self esteem, requiring mental health treatment and interventions. These are boys who may have experienced failure in outpatient therapy and who are too high risk to be treated in a less restrictive environment. Dr. William C. Holmes of the University of Pennsylvania School of Medicine conducted a study of child sexual abuse and said that results

showed that “when sexually abused boys are not treated, society must later deal with the resulting problems, including crime, suicide, drug use and more sexual abuse.” Generations exists to stop this cycle of kids abusing kids.

The Opportunity

Generations will open this new 30-bed facility that focuses on sexually abusive adolescent boys who require a higher level of care. These are boys who are unable to function in their communities or in a group home setting because of complex needs. For instance, a sexually abusive boy who also has attention deficit disorder, a boy who suffers from depression and anxiety, or a boy who suffers from post-traumatic stress disorder as a result of childhood abuse could all require more frequent and intensive psychiatric care.

What will this campaign achieve?

Generations has purchased 7+ acres adjacent to the current Generations Group Homes Horizons Campus. The Psychiatric Residential Treatment Facility (PRTF) is designed with the special needs of this population in mind. Small dormitory style bedrooms are placed in separate ‘pods’ while a glassed-in staff room is placed in the middle for optimum observability. Direct line of sight supervision is essential and allows staff to observe and intervene as needed to assist the boys with managing emotions and behaviors. Each pod will have a separate living area and outside patio area for recreation. A common dining space and clinical staff offices are located near a conference room that is used for team meetings and family visits. This PRTF facility will be licensed by DHEC and will meet all current codes and requirements for this type facility.

Generations Extra Mile Campaign takes the next step.



Generations' boys leave the program full of hope and eagerness to make a positive difference in the world they now see as a much brighter place.

The Treatment

Treatment planning will be led by a psychiatrist committed to the Generations program philosophy – treating each boy in the least restrictive environment possible while addressing the needs of the “whole child” and his family. In addition to the psychiatrist, our highly trained interdisciplinary team will include nursing staff, therapists, and direct care workers trained to understand the sexual abuse issues experienced by the victim and the young abuser.

Generations' Future

Adding the psychiatric residential treatment component to Generations' current services will allow the organization

to provide services along a continuum of care. Boys in the group homes who need more intensive treatment may be served in the PRTF, and boys who have stabilized in the PRTF but are not ready to reenter the community may be served in the group homes.

Staffing

Generations currently provides around-the-clock staff for 46 boys in 4 group homes, employing 11 administrative staff, 6 counselors, 5 supervisors, 2 support staff, and 47 direct care staff for a total of 71 full time and 9 part time employees. The PRTF program is projected to employ an additional 24 direct care staff and 3 licensed therapists. Generations

will contract with a PhD psychologist for assessments and a psychiatrist for treatment and medication management. Funding for these new employees will come primarily from the SC Department of Health and Human Services Medicaid Program and will be supplemented through grants and donations as appropriate and available. The PRTF program is not expected to need full time administrative staff, so current Administrative, HR, Business Office, and support staff will be shared. Generations currently benefits from 12 committed volunteers and expects that the PRTF program will also utilize volunteers for assistance with fundraising and other supportive tasks.

Will you travel the Extra Mile to stop the cycle of sexual abuse?

Join us in this campaign for Generations' new PRTF Campus and make a real difference. Naming opportunities are available. ➤ Call **Roseanne Brown**, Director of Development, at **864-243-5557, ext. 269** for campaign details. To learn more about Generations' programs and the deserving boys who truly receive a second chance, please visit our website at www.GenerationsGroup.com.



Generations' Mission and History



What is Generations?

Generations is a COA accredited 501(c)3 charity committed to the prevention of sexual abuse by providing best practice in assessment and services for neglected or at risk youth and their families.

Why was Generations Created?

In the late 1980's the only programs available for boys with sexual behavior problems were in locked psychiatric settings or juvenile jails. In 1991 Generations opened the first group home in the southeast that treated this population. Generations served 12 sexually abusive boys but turned down another 42 boys in the first year, making it clear that program expansions were required to meet the increasing need for specialized services for this population. The original program expanded to 32 beds by 1996. Around this time the Department of Juvenile Justice began to recognize that boys who were placed with Generations were not re-entering the criminal justice system; and Generations Alternative Program, Inc. was established in 1998 to serve an additional 26 boys exclusively for DJJ. In 2002, Generations' programs gained National Accreditation from the Council on Accreditation, joining only 18 programs in South Carolina to achieve this status.

What are Generations' Outcomes?

Data shows 98% of our boys remain free of abusive behaviors after reentering their home communities. They succeed in school, at work, and with family relationships. This success rate is in stark contrast to that of the juvenile justice system, in which up to 80% of youth return to the correctional facility within 3 years of release. Generations is able to make life-changing differences for our residents through our program by providing:

- Specialized Youth Services
- Year Round Education
- Recreational and Leisure Skills
- Family Reunification
- Spiritual Development

How many children can be served at Generations?

Since opening in 1991, Generations has served almost 700 boys. Currently we have a capacity of 20 on our Horizons Campus and 26 on our Bridges Campus. Our new Campus will allow us to serve an additional 30 at a higher level of care.

Generations' Financial Picture

Since opening in 1991, Generations has received most of its funding from the Department of Juvenile Justice, the Department of Social Services Managed Treatment Division, the Department of Mental Health, and the Governor's Office Continuum of Care for Emotionally Disturbed Children. These funds are supplemented through grants and the Luncheon for Second Chances fundraiser held annually in May. In addition, Generations' Board of Directors has begun an Endowment, with initial funding gifted by The Graham Foundation (Greenville, SC). Each year the Board designates funds from the annual fundraiser to grow this Endowment.



Roseanne Brown, Director of Development
864-243-5557 x269

Generations Group Homes, Inc.
PO Box 80009
Simpsonville, SC 29680

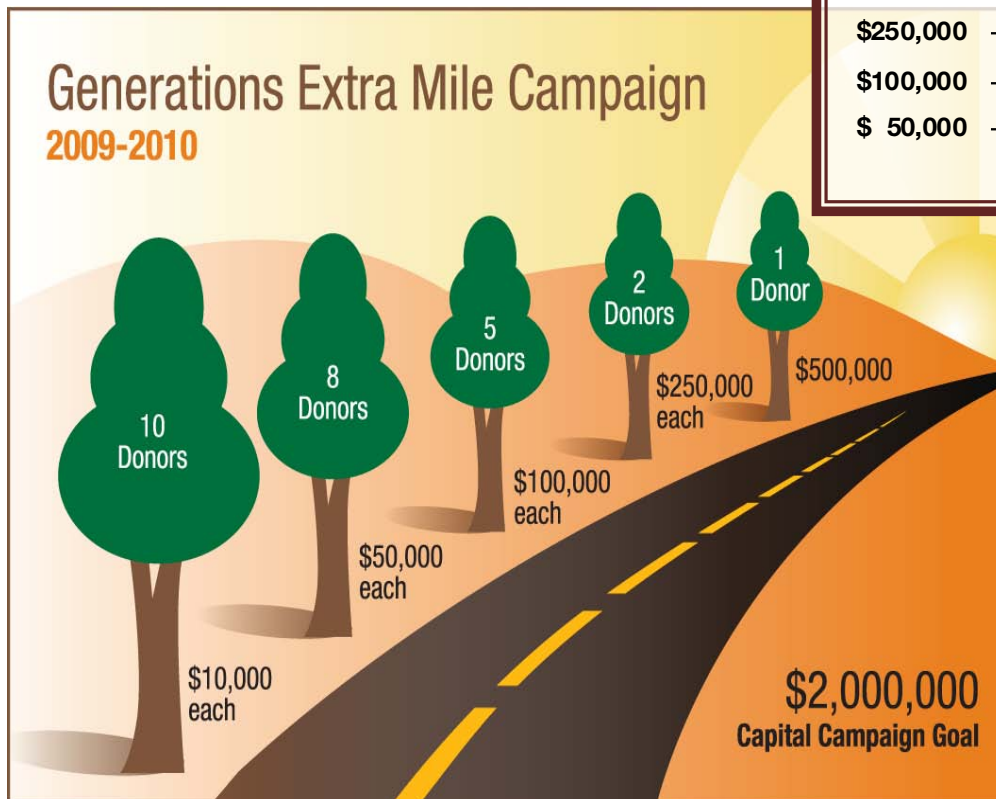
www.GenerationsGroup.com



Fundraising goal and how the funds will be used:

Naming Opportunities

- \$500,000 – Campus
- \$250,000 – Pod
- \$100,000 – Recreation Area
- \$ 50,000 – Dorm Area



Project Title: Extra Mile Campaign

Total Capital Expenses	\$ 2,000,000
CAPITAL EXPENSES	
Property	\$ 80,000
Excavation/Prep	\$ 90,000
Bricks and Mortar - Building	\$ 1,500,000
Furnishings / 14 Pass Bus / Golf Cart, etc.	\$ 325,000
Misc Campaign Expenses	\$ 5,000
Total Capital Expenses	\$ 2,000,000

On-going operational funding for the program will come from the SC Department of Health and Human Services Medicaid Program. Referrals are made through various state agencies responsible for placing children in residential treatment facilities. These agencies, including the Department of Juvenile Justice, Department of Social Services, and Department of Mental Health, recognize the need for more intensive treatment services for this especially troubled group of boys. The Department of Juvenile Justice has always been and continues to be fully supportive of Generations' success in meeting the needs of these boys and their families.



Will you travel the Extra Mile to stop the cycle of sexual abuse?

I will join the Extra Mile Society.

- Legend** \$500,000
- Pathfinder** \$250,000
- Adventurer** \$100,000
- Pioneer** \$50,000
- Traveler** \$10,000
- Other \$ _____

- Payment: My check is enclosed.
- Please contact me about paying with stock.
- Credit Card Type _____
- Card No. _____
- Name on Card _____

Name _____

Organization _____

Address _____

City _____ State _____ Zip _____

Email _____

Phone _____

I would like to speak with someone directly. Please contact me by
 phone email



Make checks payable to Generations Group Homes, Inc. and mail to PO Box 80009, Simpsonville, SC 29680 or contact Roseanne Brown, Director of Development 864-243-5557 x269.
www.GenerationsGroup.com